

Birchgrove Mill Hill Ayrton House



Typical Three Bedroom

Flat Types: C100/C102/C104 Handed: C101/C103/C105
Floors: 1st/2nd/3rd/4th/5th/6th

Kitchen/Living/Dining*:
14'0" x 26'10" / 4282 x 8178mm

Bedroom 1*: 13'6" x 13'0"
/ 4125 x 3973mm

Bedroom 2*: 8'4" x 10'3"
/ 2543 x 3128mm

Bedroom 3*: 7'5" x 10'8"
/ 2248 x 3247mm

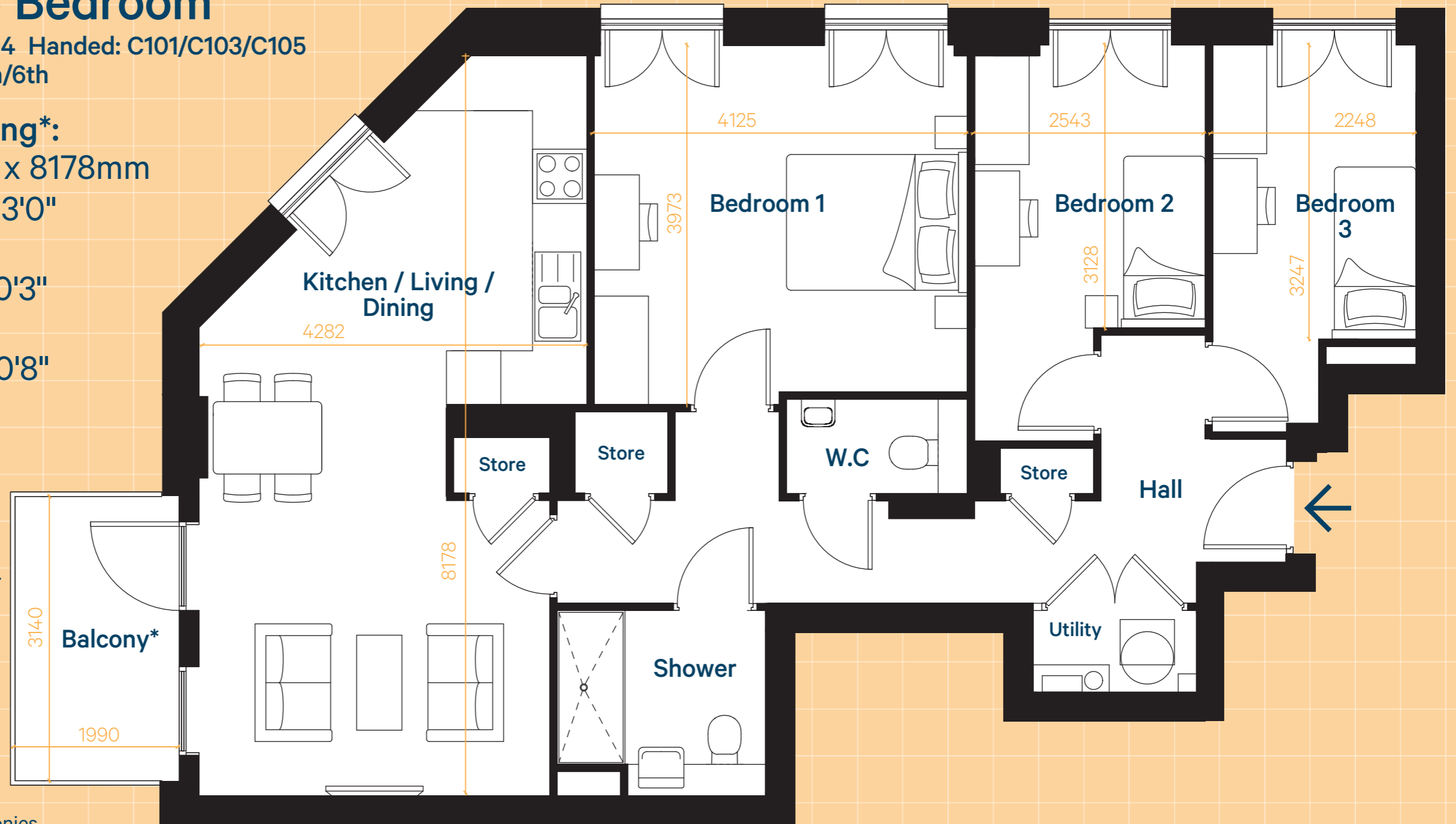
Shower: 7'6" x 6'9"
/ 2300 x 2050mm

Please note: Measurements are rounded up maximums and may vary from apartment to apartment.
*These room dimensions vary according to floor level. Please check your specific apartment measurements.

Layout as shown:
Apts. 16/24/32/40/48/56

Handed layout:
Apts. 11/19/27/35/43/51

Upper floor apartments have balconies.



Internal areas:

85.1-89.4sqm

916-963sqft



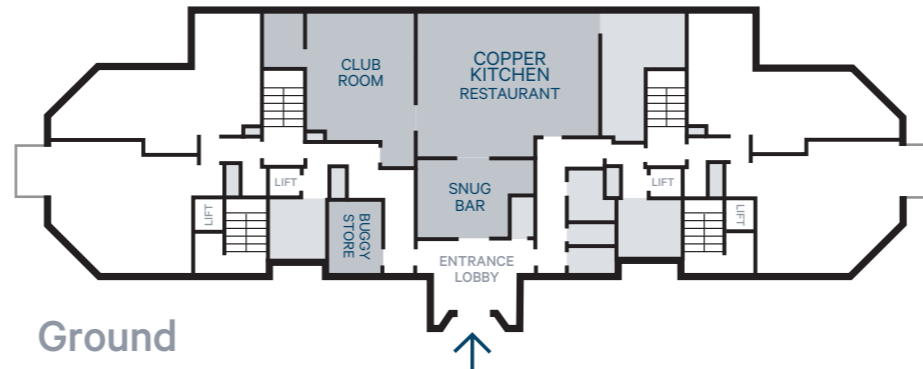
0 0.5m 2m 5m Scale 1:50 @ A3

Please note: These floor plans are intended to give a general indication of the proposed layout only. Layouts and dimensions are not intended to form part of any contract or warranty. Apartments are let unfurnished.

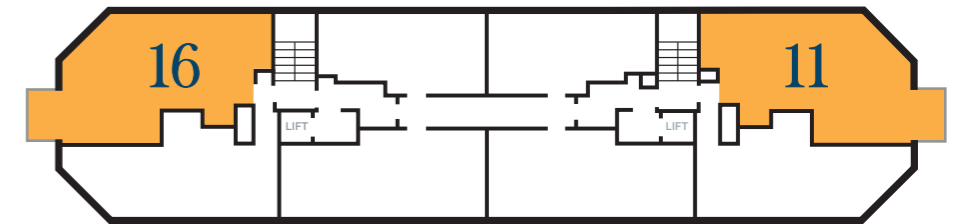
Birchgrove Mill Hill Ayrton House



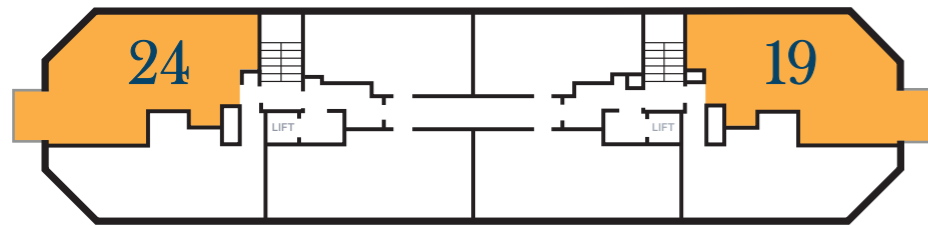
Lower Ground



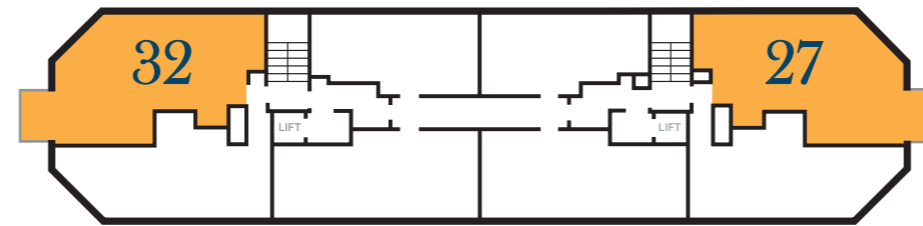
Ground



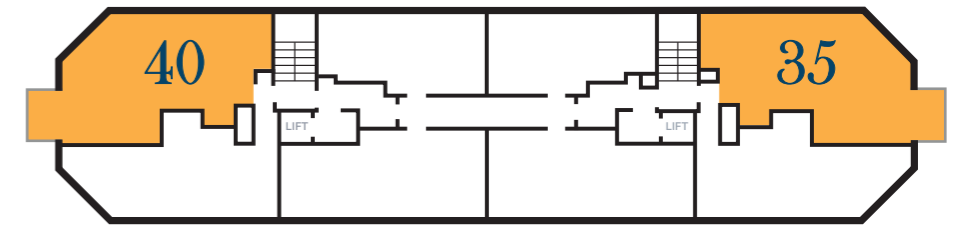
First Floor



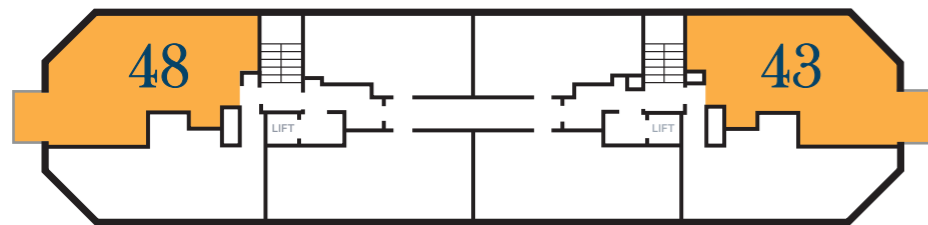
Second Floor



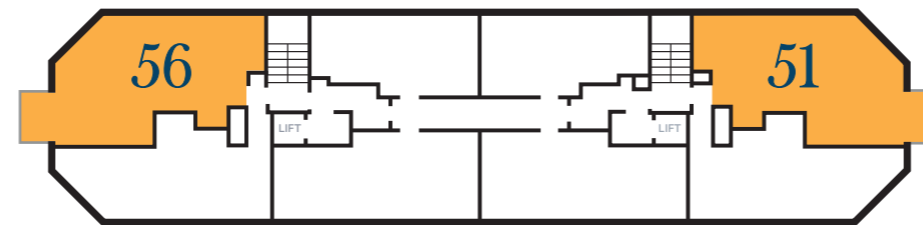
Third Floor



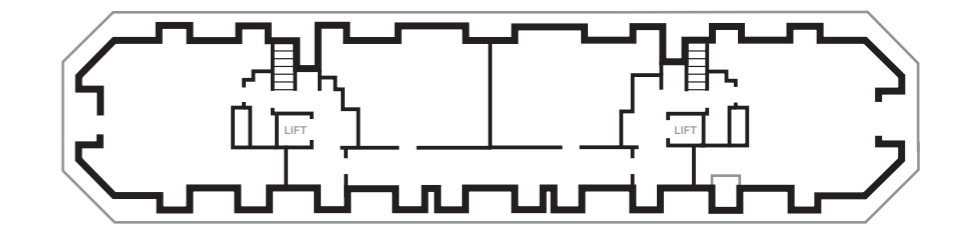
Fourth Floor



Fifth Floor



Sixth Floor



Seventh Floor



Apartment Allocation

Flat Types:
C100/C101/C102/C103/C104/C105

Please note: These drawings are intended to give a general indication of the proposed layout only. Layouts and dimensions are not intended to form part of any contract or warranty. Apartments are let unfurnished. Correct at time of printing. April 2024..

