

Birchgrove Leatherhead Christ Church Apartments



Typical Two Bedroom

Type 3

Living/Dining: 16'0" x 10'0" / 5024 x 3125mm

Kitchen: 10'0" x 8'0" / 3125 x 2515mm

Bedroom 1: 9'0" x 12'0" / 2750 x 3717mm

Bedroom 2: 7'0" x 12'0" / 2252 x 3717mm

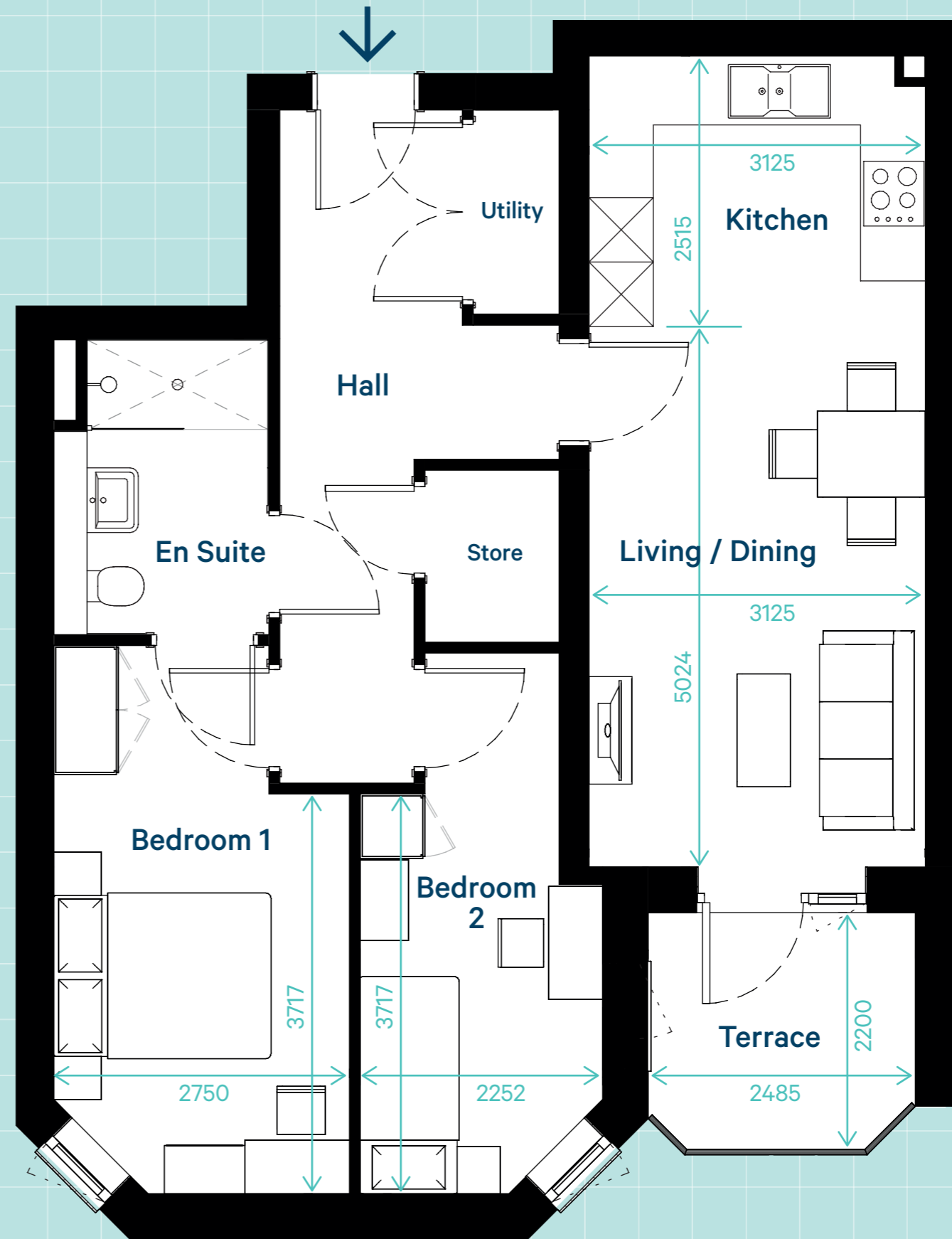
En-suite: 9'0" x 7'0" / 2750 x 2000mm

Please note: Measurements are rounded up maximums and may vary from apartment to apartment.

Layout as shown: 03, 05, 12, 14

Ground floor apartments have terraces.

First and second floor apartments have balconies.



Internal areas:

68.8sqm

741.1sqft



0 0.5m 2m 5m Scale 1:50 @ A3

Please note: These floor plans are intended to give a general indication of the proposed layout only. Layouts and dimensions are not intended to form part of any contract or warranty. Apartments are let unfurnished.