

Birchgrove Leatherhead Christ Church Apartments

Typical One Bedroom

Type 2

Living/Dining: 16'0" x 10'0" / 5024 x 3125mm

Kitchen: 13'0" x 11'0" / 4064 x 3302mm

Bedroom: 12'0" x 11'0" / 3739 x 3349mm

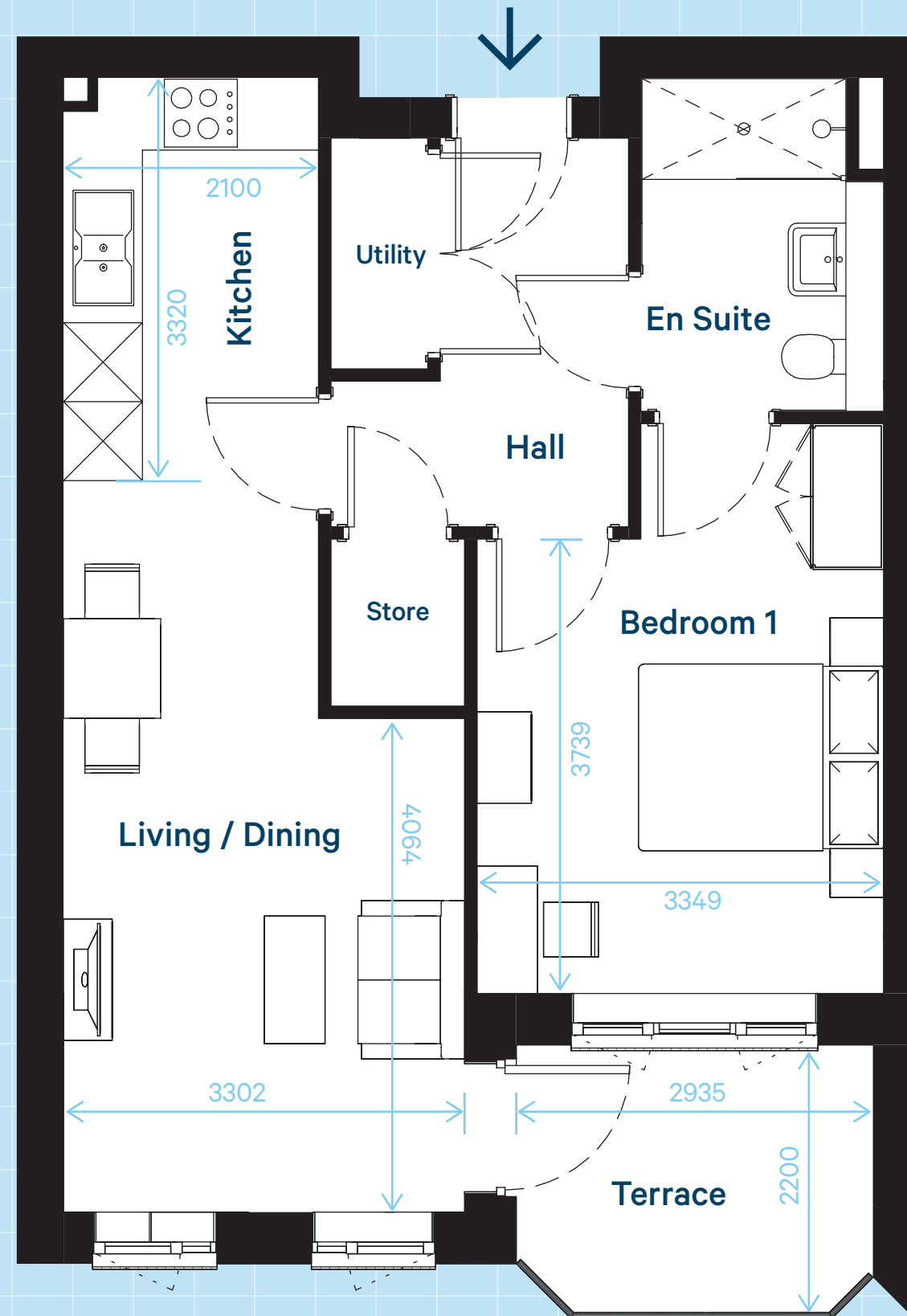
En-suite: 9'0" x 7'0" / 2750 x 2000mm

Please note: Measurements are rounded up maximums and may vary from apartment to apartment.

Layout as shown: 02, 04, 11, 13

Ground floor apartments have terraces.

First and second floor apartments have balconies.



Internal areas:

55.5sqm

597.6sqft



0 0.5m 2m 5m Scale 1:50 @ A3

Please note: These floor plans are intended to give a general indication of the proposed layout only. Layouts and dimensions are not intended to form part of any contract or warranty. Apartments are let unfurnished.